



測試報告

號碼(No.) : CE/2015/83048

日期(Date) : 2015/09/01

頁數(Page): 1 of 5

Test Report

巨崑工業股份有限公司

JU LI INDUSTRIAL CO., LTD.

台中市太平區興隆路一段70巷86號

NO. 86, LANE 70, SEC. 1, SINGLONG RD., TAIPING DISTRICT, TAICHUNG CITY 411, TAIWAN



以下測試樣品係由申請廠商所提供及確認 (The following sample(s) was/were submitted and identified by/on behalf of the applicant as) :

- 送樣廠商(Sample Submitted By) : 巨崑工業股份有限公司 (JU LI INDUSTRIAL CO., LTD.)
- 樣品名稱(Sample Description) : 套架(六價鉻)
- 收件日期(Sample Receiving Date) : 2015/08/18 AND 2015/08/27
- 測試期間(Testing Period) : 2015/08/18 TO 2015/08/24 AND 2015/08/27 TO 2015/09/01

測試需求(Test Requested) : 依據客戶要求, 參考 RoHS 指令 2011/65/EU Annex II 測試鎘、鉛、汞、六價鉻。(As specified by client, with reference to RoHS Directive 2011/65/EU Annex II to determine Cadmium, Lead, Mercury, Cr(VI) contents in the submitted sample.)

測試方法(Test Method) : 請見下一頁 (Please refer to next pages).

測試結果(Test Results) : 請見下一頁 (Please refer to next pages).

From NECO - Surface Finishing Supplier

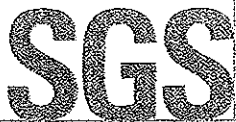


Nicole Chien / Supervisor
Signed for and on behalf of
SGS TAIWAN LTD.
Chemical Laboratory - Taipei



NECO TECHNOLOGY INDUSTRY CO., LTD.

This document is issued by the Company subject to its General Conditions of Service printed overleaf, available on request or accessible at <http://www.sgs.com/en/Terms-and-Conditions.aspx> and, for electronic format documents, subject to Terms and Conditions for Electronic Documents at <http://www.sgs.com/en/Terms-and-Conditions-Terms-e-Documents.aspx>. Attention is drawn to the limitation of liability, indemnification and jurisdiction issues defined therein. Any holder of this document is advised that information contained hereon reflects the Company's findings at the time of its intervention only and within the limits of Client's instructions, if any. The Company's sole responsibility is to its Client and this document does not exonerate parties to a transaction from exercising all their rights and obligations under the transaction documents. This document cannot be reproduced except in full, without prior written approval of the Company. Any unauthorized alteration, forgery or falsification of the content or appearance of this document is unlawful and offenders may be prosecuted to the fullest extent of the law. Unless otherwise stated the results shown in this test report refer only to the sample(s) tested.



測試報告

號碼(No.) : CE/2015/83048

日期(Date) : 2015/09/01

頁數(Page): 2 of 5

Test Report

巨崑工業股份有限公司

JU LI INDUSTRIAL CO., LTD.

台中市太平區興隆路一段70巷86號

NO. 86, LANE 70, SEC. 1, SINGLONG RD., TAIPING DISTRICT, TAICHUNG CITY 411, TAIWAN



測試結果(Test Results)

測試部位(PART NAME)No.1 : 銀色金屬鍍層 (PLATING LAYER OF SILVER COLORED METAL)

測試項目 (Test Items)	單位 (Unit)	測試方法 (Method)	方法偵測 極限值 (MDL)	結果 (Result)
				No. 1
鎘 / Cadmium (Cd)	mg/kg	酸洗脫鍍層, 參考IEC 62321-5: 2013方法, 以感應耦合電漿原子發射光譜儀檢測. / IEC 62321-5: 2013 application of modified digestion by surface etching and performed by ICP-AES.	2	n. d.
鉛 / Lead (Pb)	mg/kg	酸洗脫鍍層, 參考IEC 62321-5: 2013方法, 以感應耦合電漿原子發射光譜儀檢測. / IEC 62321-5: 2013 application of modified digestion by surface etching and performed by ICP-AES.	2	n. d.
汞 / Mercury (Hg)	mg/kg	酸洗脫鍍層, 參考IEC 62321-4: 2013方法, 以感應耦合電漿原子發射光譜儀檢測. / IEC 62321-4: 2013 application of modified digestion by surface etching and performed by ICP-AES.	2	n. d.
六價鉻 / Hexavalent Chromium Cr(VI)	**	參考IEC 62321: 2008方法, 以沸水萃取法檢測. / With reference to IEC 62321: 2008 and performed by Boiling water extraction Method. #	#	Negative

This document is issued by the Company subject to its General Conditions of Service printed overleaf, available on request or accessible at <http://www.sgs.com/en/Terms-and-Conditions.aspx> and, for electronic format documents, subject to Terms and Conditions for Electronic Documents at <http://www.sgs.com/en/Terms-and-Conditions/Terms-e-Documents.aspx>. Attention is drawn to the limitation of liability, indemnification and jurisdiction issues defined therein. Any holder of this document is advised that information contained hereon reflects the Company's findings at the time of its intervention only and within the limits of Client's instructions, if any. The Company's sole responsibility is to its Client and this document does not exonerate parties to a transaction from exercising all their rights and obligations under the transaction documents. This document cannot be reproduced except in full, without prior written approval of the Company. Any unauthorized alteration, forgery or falsification of the content or appearance of this document is unlawful and offenders may be prosecuted to the fullest extent of the law. Unless otherwise stated the results shown in this test report refer only to the sample(s) tested.



測試報告

號碼(No.) : CE/2015/83048

日期(Date) : 2015/09/01

頁數(Page): 3 of 5

Test Report

巨崑工業股份有限公司

JU LI INDUSTRIAL CO., LTD.

台中市太平區興隆路一段70巷86號

NO. 86, LANE 70, SEC. 1, SINGLONG RD., TAIPING DISTRICT, TAICHUNG CITY 411, TAIWAN



備註(Note) :

1. mg/kg = ppm ; 0.1wt% = 1000ppm
2. n. d. = Not Detected (未檢出)
3. MDL = Method Detection Limit.(方法偵測極限值)
4. **= Qualitative analysis (No Unit) 定性分析(無單位)
5. # = a. Positive means the presence of CrVI on the tested areas
(Positive表示測試區域偵測到六價鉻)
b. Negative means the absence of CrVI on the tested areas
(Negative表示測試區域未偵測到六價鉻)

The detected concentration in boiling-water-extraction solution is equal or greater than 0.02 mg/kg with 50 cm² tested areas. / 該溶液濃度 \geq 0.02 mg/kg with 50 cm² (tested areas)

This document is issued by the Company subject to its General Conditions of Service printed overleaf, available on request or accessible at <http://www.sgs.com/en/Terms-and-Conditions.aspx> and, for electronic format documents, subject to Terms and Conditions for Electronic Documents at <http://www.sgs.com/en/Terms-and-Conditions/Terms-e-Document.aspx>. Attention is drawn to the limitation of liability, indemnification and jurisdiction issues defined therein. Any holder of this document is advised that information contained hereon reflects the Company's findings at the time of its intervention only and within the limits of Client's instructions, if any. The Company's sole responsibility is to its Client and this document does not exonerate parties to a transaction from exercising all their rights and obligations under the transaction documents. This document cannot be reproduced except in full, without prior written approval of the Company. Any unauthorized alteration, forgery or falsification of the content or appearance of this document is unlawful and offenders may be prosecuted to the fullest extent of the law. Unless otherwise stated the results shown in this test report refer only to the sample(s) tested.

SGS Taiwan Ltd. : 25, Wu Chyuan 7th Road, New Taipei Industrial Park, Wu Ku District, New Taipei City, Taiwan / 新北市五股區新北產業區五權七路25號
台灣檢驗科技股份有限公司 : t (886-2) 2299-3939 f (886-2) 2299-3237 www.sgs.tw

Member of SGS Group



測試報告

號碼(No.) : CE/2015/83048

日期(Date) : 2015/09/01

頁數(Page): 4 of 5

Test Report

巨崑工業股份有限公司

JU LI INDUSTRIAL CO., LTD.

台中市太平區興隆路一段70巷86號

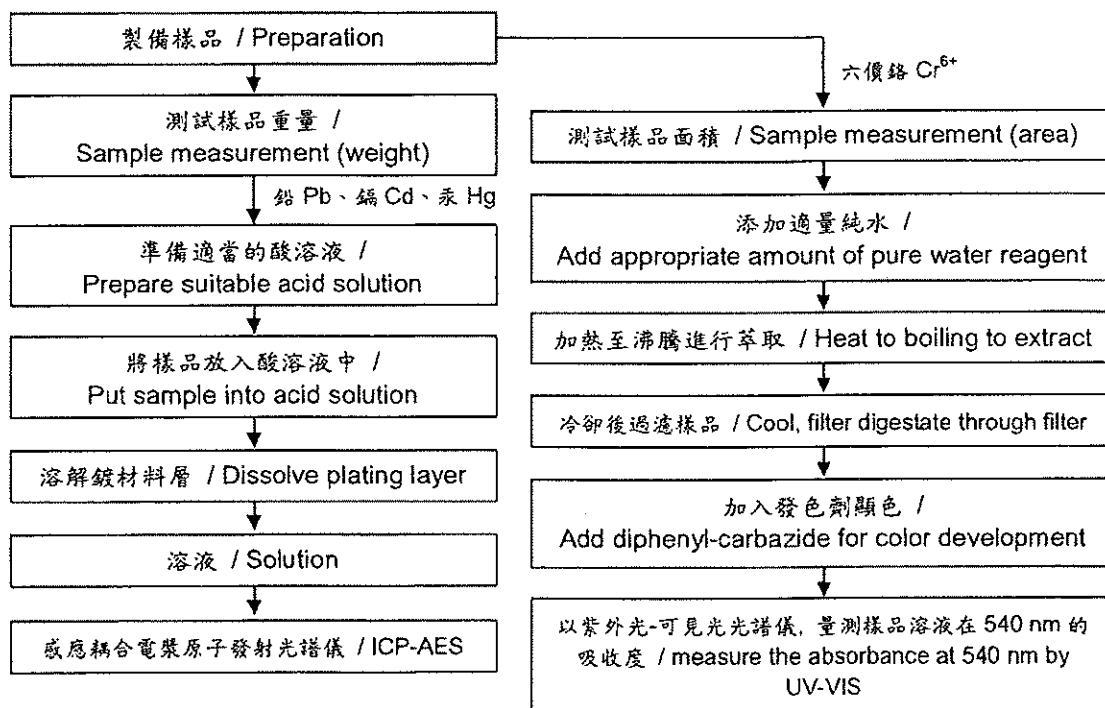
NO. 86, LANE 70, SEC. 1, SINGLONG RD., TAIPING DISTRICT, TAICHUNG CITY 411, TAIWAN



根據以下的流程圖之條件，樣品之外部鍍層已完全溶解（六價鉻測試方法除外） / The plating layer of samples were dissolved totally by pre-conditioning method according to below flow chart. (Cr⁶⁺ test method excluded)

- 測試人員：楊登偉 / Name of the person who made measurement: Climbgreat Yang
- 測試負責人：張啟興 / Name of the person in charge of measurement: Troy Chang

鍍層重金屬測試流程圖 / Flow Chart of Stripping method for metal analysis



This document is issued by the Company subject to its General Conditions of Service printed overleaf, available on request or accessible at <http://www.sgs.com/en/Terms-and-Conditions.aspx> and, for electronic format documents, subject to Terms and Conditions for Electronic Documents at <http://www.sgs.com/en/Terms-and-Conditions/Terms-e-Documents.aspx>. Attention is drawn to the limitation of liability, indemnification and jurisdiction issues defined therein. Any holder of this document is advised that information contained herein reflects the Company's findings at the time of its intervention only and within the limits of Client's instructions, if any. The Company's sole responsibility is to its Client and this document does not exonerate parties to a transaction from exercising all their rights and obligations under the transaction documents. This document cannot be reproduced except in full, without prior written approval of the Company. Any unauthorized alteration, forgery or falsification of the content or appearance of this document is unlawful and offenders may be prosecuted to the fullest extent of the law. Unless otherwise stated the results shown in this test report refer only to the sample(s) tested.

SGS

測試報告

號碼(No.) : CE/2015/83048

日期(Date) : 2015/09/01

頁數(Page): 5 of 5

Test Report

巨崑工業股份有限公司

JU LI INDUSTRIAL CO., LTD.

台中市太平區興隆路一段70巷86號

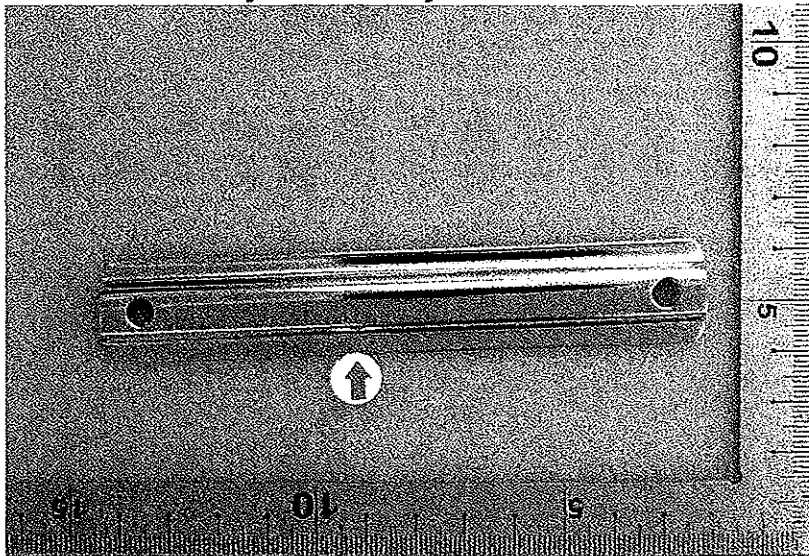
NO. 86, LANE 70, SEC. 1, SINGLONG RD., TAIPING DISTRICT, TAICHUNG CITY 411, TAIWAN



* 照片中如有箭頭標示，則表示為實際檢測之樣品/部位。*

(The tested sample / part is marked by an arrow if it's shown on the photo.)

CE/2015/83048



** 報告結尾 (End of Report) **

This document is issued by the Company subject to its General Conditions of Service printed overleaf, available on request or accessible at <http://www.sgs.com/en/Terms-and-Conditions.aspx> and, for electronic format documents, subject to Terms and Conditions for Electronic Documents at <http://www.sgs.com/en/Terms-and-Conditions/Terms-e-Documents.aspx>. Attention is drawn to the limitation of liability, indemnification and jurisdiction issues defined therein. Any holder of this document is advised that information contained hereon reflects the Company's findings at the time of its intervention only and within the limits of Client's instructions, if any. The Company's sole responsibility is to its Client and this document does not exonerate parties to a transaction from exercising all their rights and obligations under the transaction documents. This document cannot be reproduced except in full, without prior written approval of the Company. Any unauthorized alteration, forgery or falsification of the content or appearance of this document is unlawful and offenders may be prosecuted to the fullest extent of the law. Unless otherwise stated the results shown in this test report refer only to the sample(s) tested.